



**WEAVE ~ IT WEAVES**

**PRICE 15c**

**T**HIS book of Weave-It Weaves is designed to suggest patterns which will greatly increase the attractiveness of almost any article or garment made with your Weave-It.

Many of these basic designs, when carefully assembled, create entirely new designs which help to carry out an individual artistic expression. The color, too, can be varied to suit the mood or the taste of the individual. Squares woven entirely of yarn of one color can be combined to produce garments of soft, quiet tones or brilliant solid-color effects. In the same way, yarns of harmonizing or contrasting colors can be combined to produce an unlimited variety of colorful patterns.

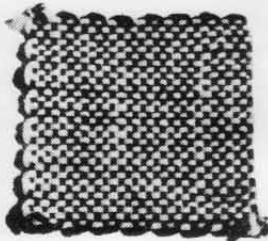
Copyright 1938  
By DONAR PRODUCTS CORP.

Turn the "Weave-It" again so that curved arrow No. 3 points toward you. Pass the yarn through the first and second pins to the near side coming out between the first and second pins. Pass yarn around two pins and go back to the far side, bringing the yarn out the open space; go around two pins and back to the near side coming out the open space, etc., until the "Weave-It" is filled. See: Figure 3.

To measure the correct amount of yarn needed for weaving, wind yarn loosely four and one-half times around the "Weave-It" on the outside of the pins and break yarn. Unwind the yarn from the outside of the pins and thread the needle. Starting at **W** between the first and second pins, pass the needle over the outside loop, under the next yarn, over the next, under, over, etc., across and draw the yarn completely through. Go around two pins and come back over the outside loop, under, over, under, over, etc., bringing the needle out at the open space. Repeat weaving in this manner across "Weave-It," ending with the last row of weaving **NEXT TO THE PINS**. Turning corner, tie yarn into the first loop around the pins. Remove the completed square from the pins by pushing up from underneath. See: Figure 4.

The squares may be either crocheted or sewed together through the loop. The finished article should be pressed under a damp cloth.

Variations may be made in the squares by using different weights of yarns; winding with one color and weaving with another; winding with two strands of a light-weight yarn and weaving with a double strand, etc.

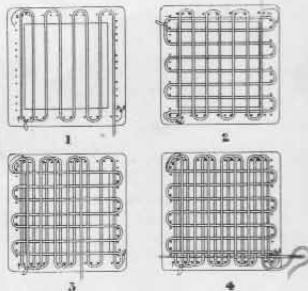


## DIRECTIONS for USING THE WEAVE-IT

Hold the "Weave-It" with the side marked with the arrow No. 1 in front of you, the arrow pointing away from you. Holding the end of yarn toward you at the arrow, draw

the yarn between the pins to the far side of the "Weave-It" in the direction indicated by the arrow. Pass the yarn, to the right, around the first two pins and return to the side nearest you, drawing the yarn out between the second and third pins at the right of the arrow. Tie securely with end of yarn close to the pins. Pass the yarn to the right around the next two pins and draw to the far side bringing it out between the first and second pins in the group directly across. Pass the yarn to the right around two pins and back to the near side, out between the first and second pins in the next group, around two pins and back, etc., until you have reached curved arrow No. 2. See: Figure 1.

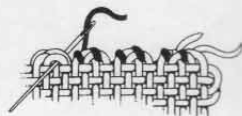
Now turn the "Weave-It" so that curved arrow No. 2 points directly away from you. Pass yarn around first two pins and go to the far side, bringing the yarn out between first and second pins; around two pins and back to the near side between the first and second pins in the next group, etc., until you reach curved arrow No. 3. See: Figure 2.



## GENERAL DIRECTIONS

**Weaving Squares**—It is important that the square be perfect. You can be sure of perfect squares if after weaving the square and before removing it from frame, you push the yarn close to the pins and straighten each line. Tie a slip knot when ending the square (pass the thread around the vacant pin and with needle draw thread through nearest loop and slip a knot). Heavy yarns, cotton threads and linen floss, should not be woven tight. Weave lightweight wool yarns rather tight. This makes the square look open on the Weave-It, but when it is pushed off the frame, it has a close weave. Silk and wool yarns make rather open squares. To get a closer weave drop each square in water and let dry. This process shrinks the yarn and makes a smaller, but tighter square.

**Directions for sewing squares:** The over and over stitch is most popular. This is done by holding two squares together matching the corners and loops. With a single yarn, sew over and over into each loop (2 stitches in each pair of loops) drawing the thread rather tightly (see sketch). The long thread left on the square after weaving is used for sewing. When the sewing yarn is almost used up, be sure to tie a slip knot or fasten securely before using another length of yarn. When using a new thread for sewing, weave the loose end an inch down on the wrong side. Draw needle through first two loops (at edge) and tie a slip knot. There is no danger of squares coming apart if they are caught at each beginning and ending. All loose ends should be worked in on wrong side.



*The Weaving instructions on the following pages, are by necessity, abbreviated and your attention is directed to their interpretation: 1R (first row), 2R (second row), etc.; W (weave), U (under), O (over). You will find it easy to weave special designs if you follow directions.*

## FOUR SQUARES IN ONE

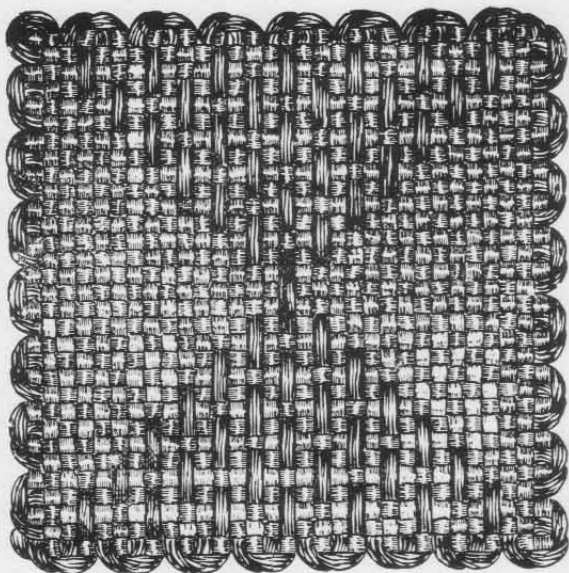
- 1R — weave plain  
 2R — U3; O1; U3; O1; U3; O1; U3; W16  
 3R — W14; U3; O1; U3; O1; U3; O1; U3; W2  
 4R — same as row 2  
 5R — same as row 3  
 6R — same as row 2  
 7R — same as row 3  
 8R — same as row 2  
 9R — same as row 2  
 10R — same as row 3  
 11R — same as row 2  
 12R — same as row 3  
 13R — same as row 2  
 14R — same as row 3  
 15R — same as row 2  
 16R — weave plain

7

## DIAGONAL STRIPES

- 1R — weave plain  
 2R — U3; W7; U3; W7; U3; W8  
 3R — W6; U3; W7; U3; W7; U3; W2  
 4R — W4; U3; W7; U3; W7; U3; W4  
 5R — W2; U3; W7; U3; W7; U3; W6  
 6R — W8; U3; W7; U3; W7; U3  
 7R — same as row 6  
 8R — same as row 5  
 9R — same as row 4  
 10R — same as row 3  
 11R — same as row 2  
 12R — same as row 2  
 13R — same as row 3  
 14R — same as row 4  
 15R — same as row 5  
 16R — weave plain

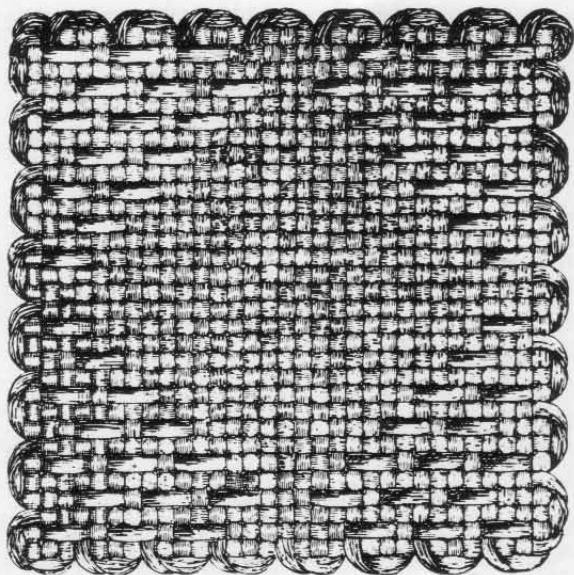
9



## HOUR GLASS

- 1R — weave this row plain  
 2R — W2; U3; O1; U3; O1; U3; O1; U3; O1; U3; O1; U3; O1; U3; W2  
 3R — W4; U3; O1; U3; O1; U3; O1; U3; O1; U3; O1; U3; O1; U3; W4  
 4R — W6; U3; O1; U3; O1; U3; O1; U3; O1; U3; O1; U3; O1; U3; W6  
 5R — W8; U3; O1; U3; O1; U3; O1; U3; O1; U3; W8  
 6R — W10; U3; O1; U3; O1; U3; O1; U3; W10  
 7R — W12; U3; O1; U3; W12  
 8R — W14; U3; W14  
 9R — same as row 8  
 10R — same as row 7  
 11R — same as row 6  
 12R — same as row 5  
 13R — same as row 4  
 14R — same as row 3  
 15R — same as row 2  
 16R — same as row 1

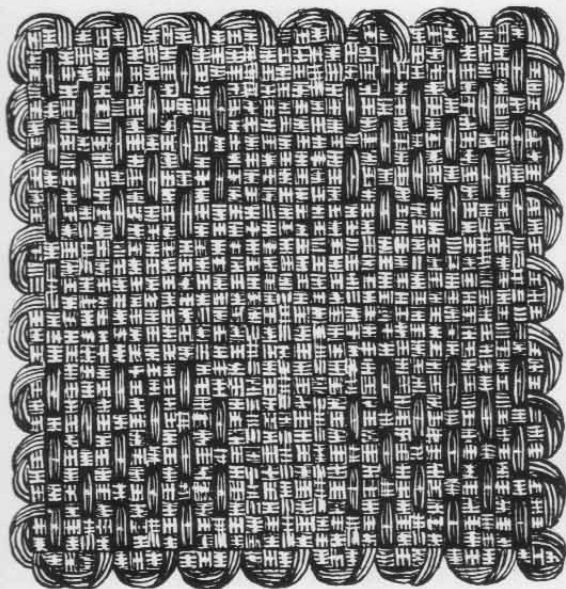
11



## SUNKEN DIAMOND

- 1R — weave this row plain  
 2R — U3; O1; U3; O1; U3; O1; U3; O1; U3; O1; U3; O1; U3; O1; U3  
 3R — W2; U3; O1; U3; O1; U3; W5; U3; O1; U3; O1; U3; W2  
 4R — U3; O1; U3; O1; U3; W9; U3; O1; U3; O1; U3  
 5R — W2; U3; O1; U3; W13; U3; O1; U3; W2  
 6R — U3; O1; U3; W17; U3; O1; U3  
 7R — W2; U3; W21; U3; W2  
 8R — same as row 1  
 9R — same as row 1  
 10R — same as row 7  
 11R — same as row 6  
 12R — same as row 5  
 13R — same as row 4  
 14R — same as row 3  
 15R — same as row 2  
 16R — same as row 1

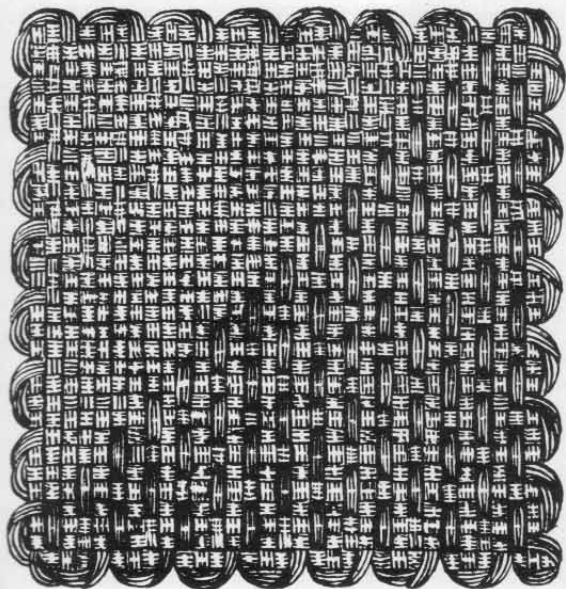
13



## CROSS

- 1R — weave plain  
 2R — U3; O1; U3; O1; U3; W9; U3; O1; U3; O1; U3  
 3R — W2; U3; O1; U3; O1; U3; W5; U3; O1; U3; O1;  
 U3; W2  
 4R — same as row 2  
 5R — same as row 3  
 6R — same as row 2  
 7R — weave plain  
 8R — weave plain  
 9R — weave plain  
 10R — weave plain  
 11R — same as row 2  
 12R — same as row 3  
 13R — same as row 2  
 14R — same as row 3  
 15R — same as row 2  
 16R — weave plain

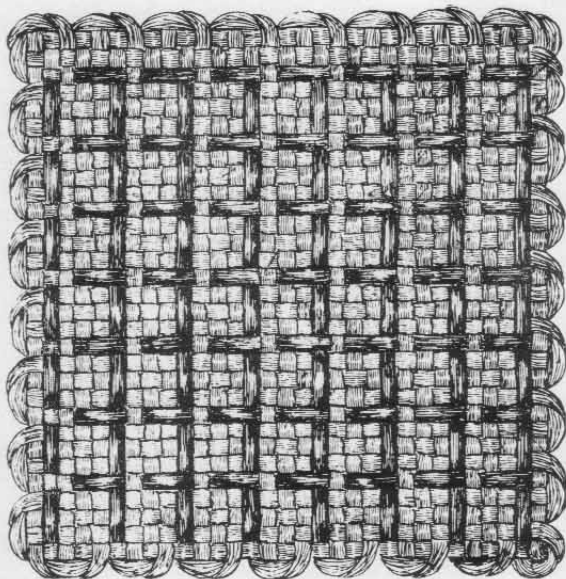
15



## DIAGONAL HALF SQUARE

- 1R — weave plain  
 2R — U3; O1; U3; O1; U3; O1; U3; O1; U3; O1; U3;  
 O1; U3; O1; U3  
 3R — W2; U3; O1; U3; O1; U3; O1; U3; O1; U3; O1;  
 U3; O1; U3; W2  
 4R — W4; U3; O1; U3; O1; U3; O1; U3; O1; U3; O1;  
 U3; O1; U3  
 5R — W2; U3; O1; U3; O1; U3; O1; U3; O1; U3; O1;  
 U3; W6  
 6R — W8; U3; O1; U3; O1; U3; O1; U3; O1; U3; O1;  
 U3  
 7R — W2; U3; O1; U3; O1; U3; O1; U3; O1; U3;  
 W10  
 8R — W12; U3; O1; U3; O1; U3; O1; U3; O1; U3  
 9R — W2; U3; O1; U3; O1; U3; O1; U3; W10  
 10R — W16; U3; O1; U3; O1; U3; O1; U3  
 11R — W2; U3; O1; U3; O1; U3; W18  
 12R — W20; U3; O1; U3; O1; U3  
 13R — W2; U3; O1; U3; W22  
 14R — W24; U3; O1; U3  
 15R — W2; U3; W26  
 16R — weave plain

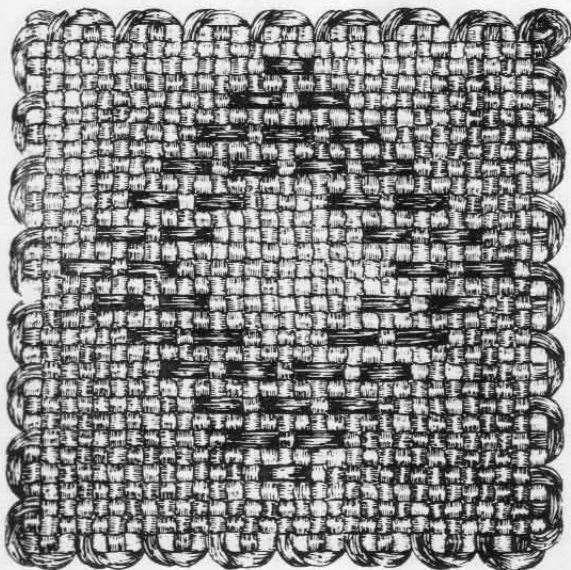
17



## EIGHT SINGLE RIB

- 1R — weave this row plain  
 2R — U3; O1; U3; O1; U3; O1; U3; O1; U3; O1; U3; O1; U3  
 3R — W1; O3; W1; O3; W1; O3; W1; O3; W1; O3; W1; O3; W1; O3; W1; O3; W3  
 4R — same as row 2  
 5R — same as row 3  
 6R — same as row 2  
 7R — same as row 3  
 8R — same as row 2  
 9R — same as row 3  
 10R — same as row 2  
 11R — same as row 3  
 12R — same as row 2  
 13R — same as row 3  
 14R — same as row 2  
 15R — same as row 3  
 16R — weave this row plain

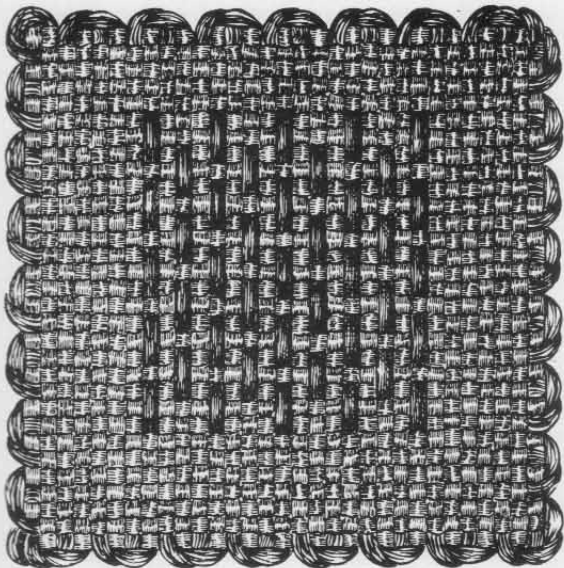
19



## DOUBLE OUTLINE DIAMOND

- 1R — weave this row plain  
 2R — W14; U3; W14  
 3R — W12; U3; O1; U3; W12  
 4R — W10; U3; O1; U3; O1; U3; W10  
 5R — W8; U3; O1; U3; O1; U3; O1; U3; W8  
 6R — W6; U3; O1; U3; W5; U3; O1; U3; W6  
 7R — W4; U3; O1; U3; W9; U3; O1; U3; W4  
 8R — W2; U3; O1; U3; W13; U3; O1; U3; W2  
 9R — same as row 7  
 10R — same as row 6  
 11R — same as row 5  
 12R — same as row 4  
 13R — same as row 3  
 14R — same as row 2  
 15R — same as row 1  
 16R — same as row 1

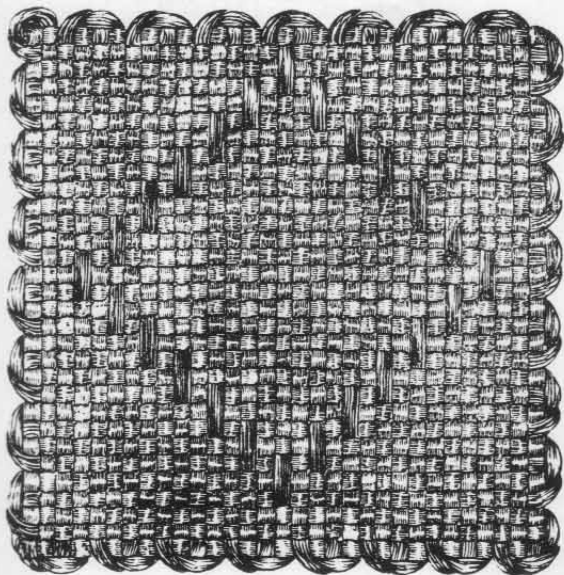
21



## RAISED SQUARE

- 1R — weave this row plain  
 2R — weave this row plain  
 3R — weave this row plain  
 4R — W6; U3; O1; U3; O1; U3; O1; U3; O1; U3; W6  
 5R — W8; U3; O1; U3; O1; U3; O1; U3; W8  
 6R — same as row 4  
 7R — same as row 5  
 8R — same as row 4  
 9R — same as row 5  
 10R — same as row 4  
 11R — same as row 5  
 12R — same as row 4  
 13R — same as row 1  
 14R — same as row 1  
 15R — same as row 1  
 16R — same as row 1

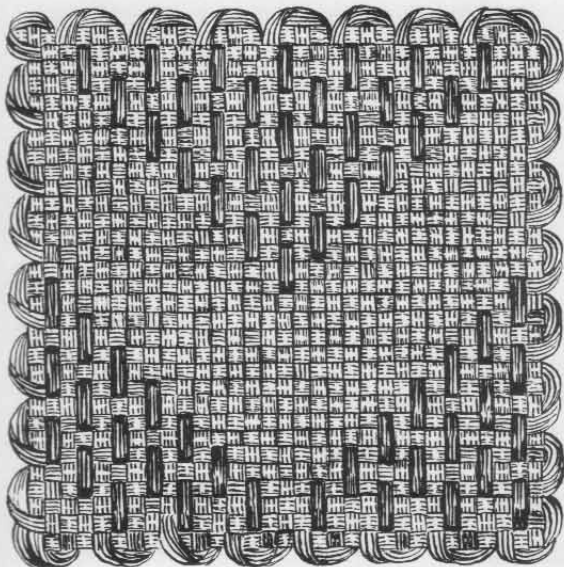
23



## SINGLE OUTLINE DIAMOND

- 1R — weave this row plain  
 2R — W14; U3; W14  
 3R — W12; U3; O1; U3; W12  
 4R — W10; U3; W5; U3; W10  
 5R — W8; U3; W9; U3; W8  
 6R — W6; U3; W13; U3; W6  
 7R — W4; U3; W17; U3; W4  
 8R — W2; U3; W21; U3; W2  
 9R — same as row 7  
 10R — same as row 6  
 11R — same as row 5  
 12R — same as row 4  
 13R — same as row 3  
 14R — same as row 2  
 15R — same as row 1  
 16R — same as row 1

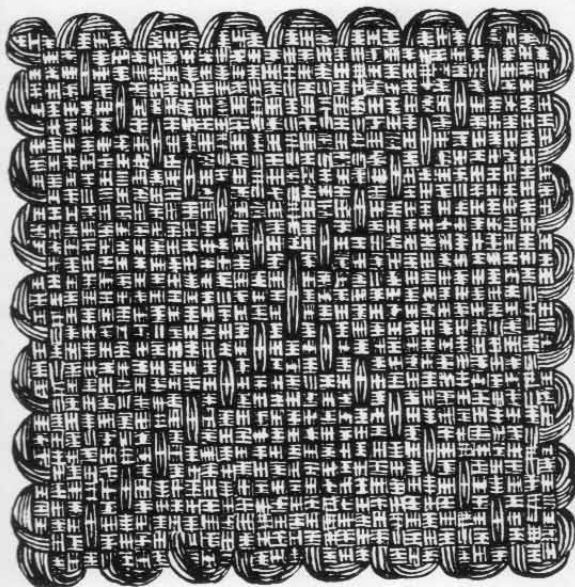
25



## ZIG-ZAG

- 1R — weave this row plain  
 2R — W2; U3; O1; U3; O1; U3; O1; U3; O1; U3; O1; U3; O1; U3; W2  
 3R — W4; U3; O1; U3; O1; U3; O1; U3; O1; U3; O1; U3; O1; U3; W4  
 4R — W6; U3; O1; U3; O1; U3; O1; U3; O1; U3; W6  
 5R — W8; U3; O1; U3; O1; U3; O1; U3; W8  
 6R — W10; U3; O1; U3; O1; U3; W10  
 7R — W12; U3; O1; U3; W12  
 8R — W14; U3; W14  
 9R — weave this row plain  
 10R — W2; U3; W21; U3; W2  
 11R — U3; O1; U3; W17; U3; O1; U3  
 12R — W2; U3; O1; U3; W13; U3; O1; U3; W2  
 13R — U3; O1; U3; O1; U3; W9; U3; O1; U3; O1; U3  
 14R — W2; U3; O1; U3; O1; U3; W5; U3; O1; U3; O1; U3; W2  
 15R — U3; O1; U3; O1; U3; O1; U3; O1; U3; O1; U3; O1; U3; O1; U3  
 16R — weave this row plain

27



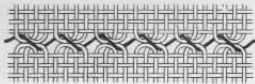
## CROSSROADS

- 1R — weave plain  
 2R — W2; U3; W21; U3; W2  
 3R — W4; U3; W17; U3; W4  
 4R — W6; U3; W13; U3; W6  
 5R — W8; U3; W9; U3; W8  
 6R — W10; U3; W5; U3; W10  
 7R — W12; U3; O1; U3; W12  
 8R — W14; U3; W14  
 9R — same as row 8  
 10R — same as row 7  
 11R — same as row 6  
 12R — same as row 5  
 13R — same as row 4  
 14R — same as row 3  
 15R — same as row 2  
 16R — weave plain

29



*The Lacy Stitch:* Match two squares together and with yarn sew through first loop on far side working from right to left and second loop on near side making one stitch in each pair of loops. Be careful not to draw the thread too tight. Sketch shows result of lacy stitch.



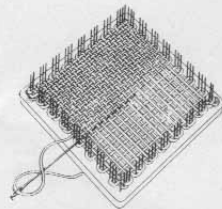
*The Cross-stitch:* Start same as Lacy stitch, but before going on to second pair of loops, go back across picking up remaining loops. Very pretty for two-tone effect.



Squares made of linen thread and sewed together with plain cotton thread (spool) are very effective. Match the loops exactly. With needle and thread sew three stitches in each loop (slipping a knot on each end of loop). Hide the thread by sewing through either of the squares to the next pair of loops. Repeat across the square.

**Pressing**—Pressing the garment is very essential. Before assembling the different pieces of any garment press on wrong side with hot iron and a damp cloth. Dotted lines in the directions indicate darts and seams. Heavy lines mean openings. All darts may be stitched on the machine; it saves time and is a secure stitch. Before cutting away extra points and edges, stitch on machine to prevent raveling. Either button hole stitch or single crochet around the edge.

**Sizes**—*To reduce or enlarge patterns:* Take hip and bust measurements. For instance, size sixteen requires 10 squares for bust measurement and 12 squares for hip measurement. For smaller or larger sizes, reduce or add squares. Average size requires 8 squares in length of skirt. If needed, add another row in length and turn under half a square for a hem. Many times Junior squares are used to enlarge or reduce sizes.



## WEAVE-IT

	Price
No. 1000 Weave-It .....	4" sq. 1.00
No. 1050 Weave-It .....	2" sq. .50
New De Luxe .....	4" sq. 1.25
De Luxe Weave-It .....	4" sq. 1.50
No. 1150 Rug Weave-It .....	5" sq. 1.50

### WEAVE-IT BOOKS

There are a number of Weave-It Books that give complete illustrations, diagrams and directions for making a wide variety of dresses, coats, sweaters, afghans, baby things and children's clothes. They are all priced at twenty-five cents. Send for our circular.

### REPLACEMENT NEEDLES

Junior Weave-It Needles .....	.15
Regular Needles .....	.25
Rug Weave-It Needles .....	.25

**DONAR PRODUCTS CORP.**  
**MEDFORD · · · MASSACHUSETTS**