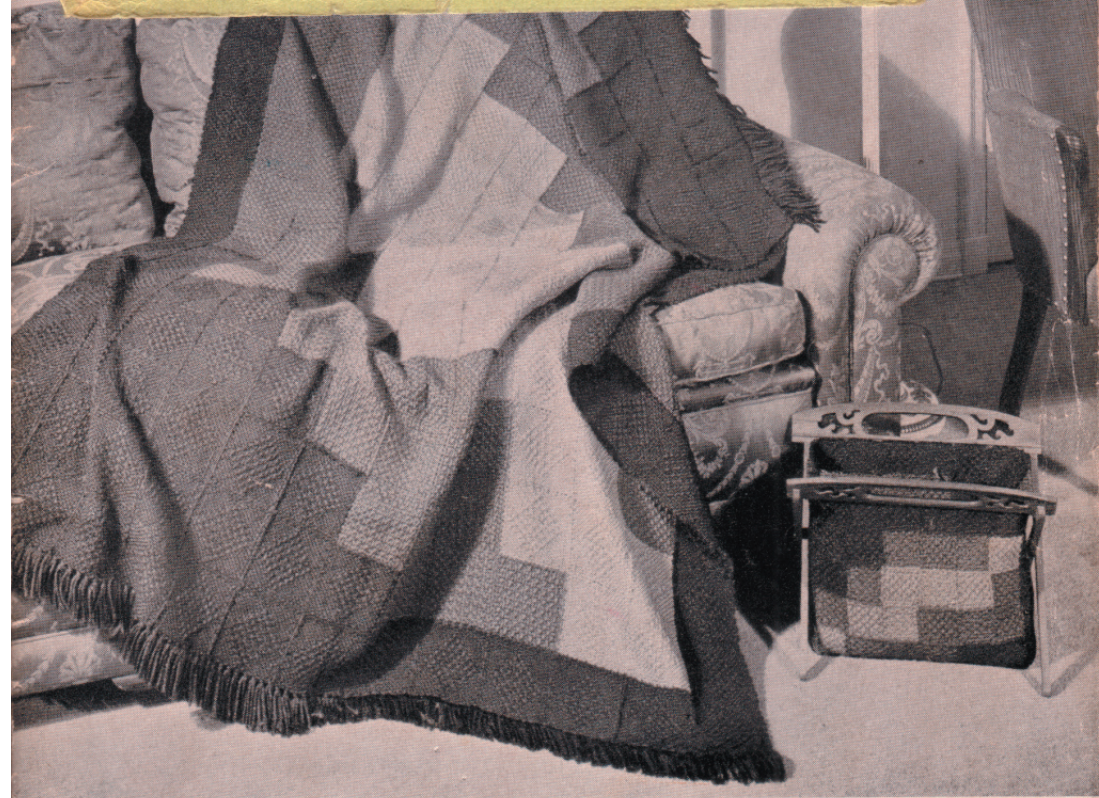


Margaret Vasey

IMPORTANT

**PLEASE LOOK INSIDE
BEFORE READING BOOK**



LIGHT AND SHADOW—See page 4.

LOOMETTE

AFGHANS AND BAGS

PATTERNS AND SPECIFICATIONS

ERRATA

We call your attention to the following corrections and omissions which have been discovered since the publication of this book.

PAGE 4

Light and Shadow:

L—56 sqs.
M—70 sqs. ,
D—108 sqs.

Oriental Rose:

L—12 sqs. 1/2 hank.
ML—72 sqs. 3 hks.

PAGE 7

Mosaic:

L—178 sqs. 28 half sections.
D—61 sqs. 20 half sections.

PAGE 9

Ancient Fragment:

L—83 sqs. 3 1/2 hanks.
M—70 sqs. 3 hanks.
D—68 sqs. 3 hanks.

PAGE 10

Cambridge Beauty:

L—170 sqs. 8 half sections.

Dot and Dash:

L—124 sqs. 6 half sections.
D—62 sqs. 2 half sections.

PAGE 11

Sophisticate:

D—62 sqs. 3 hanks.

PAGE 12

Malibu:

L—144 sqs. 6 1/2 hanks.
(no ML—strike out)
M—89 sqs., etc.

PAGE 13

Checkerboard:

L—77 sqs. 3 1/2 hanks.
D—48 sqs.

PAGE 14

Should be "Autumn Ecstasy" instead of "Fiesta"

L—50 sqs. 2 1/2 hanks.
ML—32 sqs. 1 1/2 hanks.
M—28 sqs. 1 1/2 hanks.
D—111 sqs. 5 hanks.

PAGE 14—Continued

Diagram shows dark center. Photograph, page 17, shows same atghan with light center. Very beautiful either way.

Peruvian:

L—20 sqs. 26 half sections.
ML—65 sqs. 26 half sections.
MD—No sections.

PAGE 16

Coverlet for twin bed size with ample drop on sides and allowance for tuck in under pillow: 507 sqs. in arrangement following Kentucky Coverlet. Allow ten additional rows to width for full bed size.

PAGE 17

Autumn Ecstasy:

(see page 14)

PAGE 18

Should be "Fiesta" instead of "Autumn Ecstasy."

L—86 sqs. 3 1/2 hanks.
M—48 sqs. 2 1/2 hanks.
D—87 sqs. 4 hanks.

PAGE 24

Rose of Sharon:

L—103 sqs. 2 half sections.
M—10 sqs. 1 half section.
D—12 sqs. 1 half section.

Pastel Medley:

L—blue, 44 sqs.
M—pink, 86 sqs.

PAGE 26

Little Darling:

Design and size may be optional.

PAGE 27

Golden Dream:

Arrangement of design and size may be adapted to individual requirements.

READ — IMPORTANT

The LOOMETTE Afghan and Bag book is the third in a series of LOOMETTE weaving instruction materials. Reference is frequently made herein to the other two books: for directions for weaves, Original LOOMETTE Weaves; and for general instructions, Garments and Gift Suggestions.

The SHADED AFGHAN, being new and smart, is suggested more often in the following pages than is the afghan of many colors. Variegated yarns are recommended for afghans of a practical nature, such as laprobes, couch covers, automobile seat covers and porch robes.

Materials Recommended for Afghans

Knitting Worsted	Shetland*
Luster Rug Wool	Saxony (4 fold)*
Germantown*	Pompadour*

*Particularly suited to baby blankets.

Where hank wool is specified,
we refer to the 3.75-oz. hanks.

♦

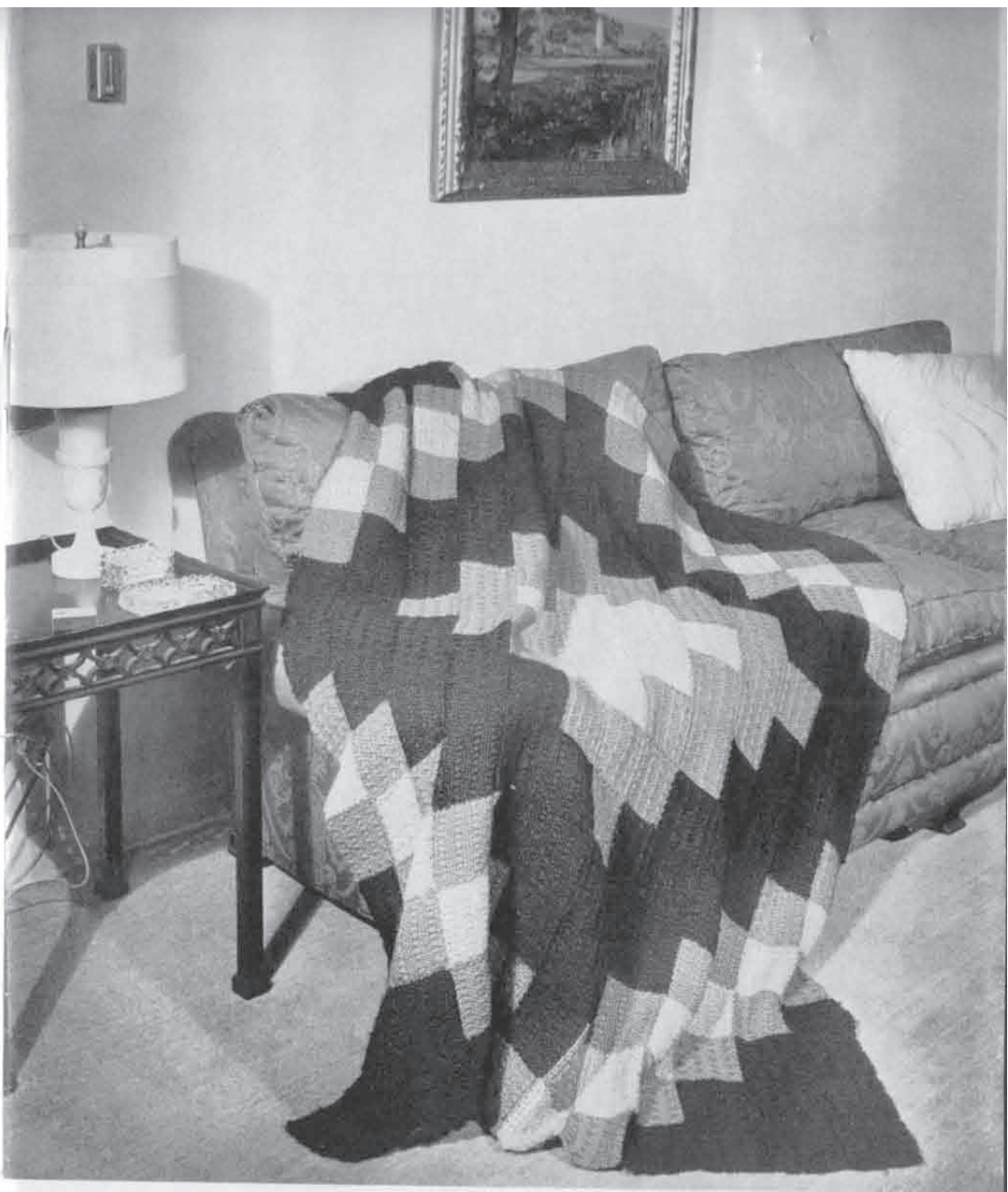
The following key is used in the patterns:

- L—Indicates the lightest shade (or color).
- ML—Indicates the next darker shade.
- M—Indicates the medium shade.
- MD—Indicates the next darker shade.
- D—Indicates the darkest shade.

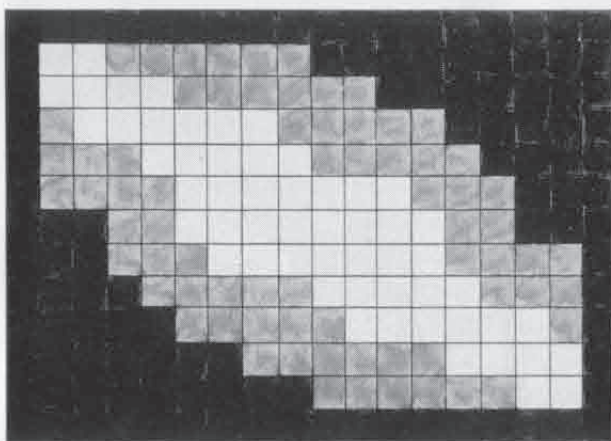
♦

Designs by Estella Gammon, Dorothea Hulse, and
Cartercraft Staff.

Copyright, 1937—Cartercraft Studios



ORIENTAL ROSE



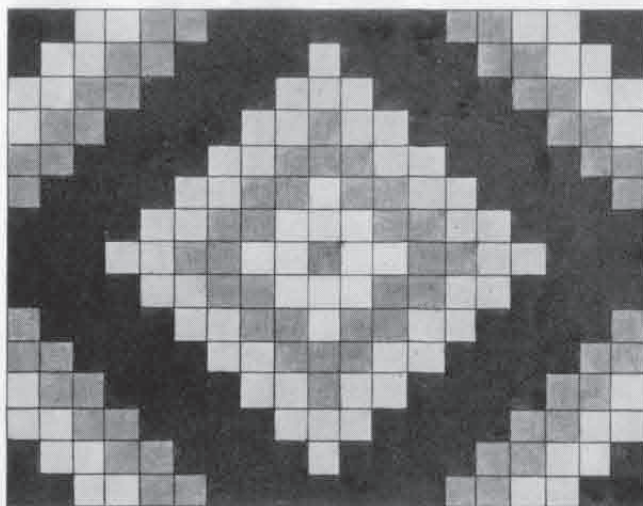
Light and Shadow (matching bag, page 29)

Light to dark green or rose. Effective shaded from yellow to orange. Fringed.

L—108 sqs., 4½ hks.; Weave 5.

M—56 sqs., 2½ hks.; Weave 1.

D—70 sqs., 3 hks.; Weave 5.



Oriental Rose

Shading from rose pink to wine red.

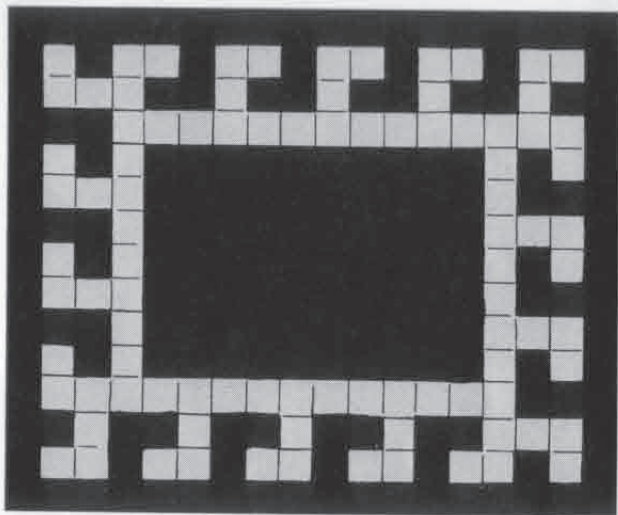
L—42 sqs., 2 hks.

ML—44 sqs., 2 hks.

M—73 sqs., 3 hks.

D—128 sqs., 5½ hks.

Weave 20 throughout.



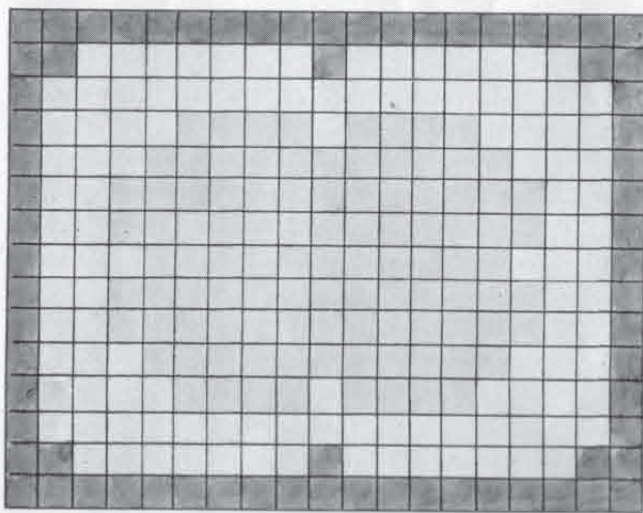
Romanesque

Royal blue, eggshell border; or eggshell ground with wine or green border.

L—92 sqs., 4 hks.; Weave 11.

D—178 sqs., 7½ hks.; Weave 12 and reverse.

(Read page 2, important note, Original LOOMETTE Weaves.)



Miami

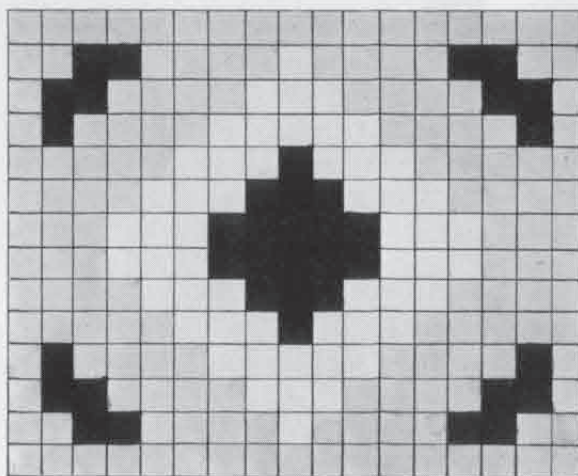
Three shades of sea green, blue; or shading from yellow, through orange to brown.

L—114 sqs., 5 hks.

ML—101 sqs., 4½ hks.

MD—70 sqs., 3 hks.

Weave 20 throughout.



Desert Bronze

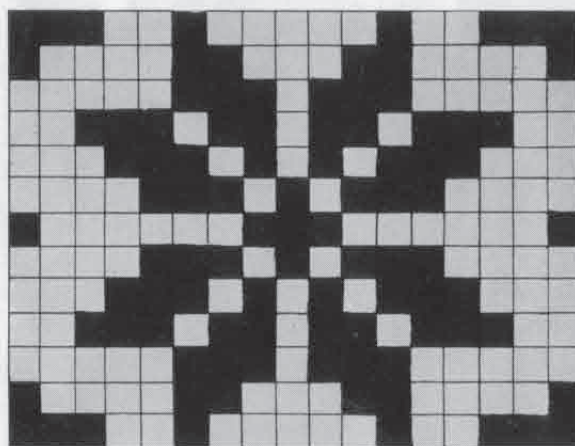
From light henna to bronze.

L—54 sqs., 2½ hks.

M—146 sqs., 6 hks.

D—38 sqs., 1½ hks.

Weave 1 throughout.

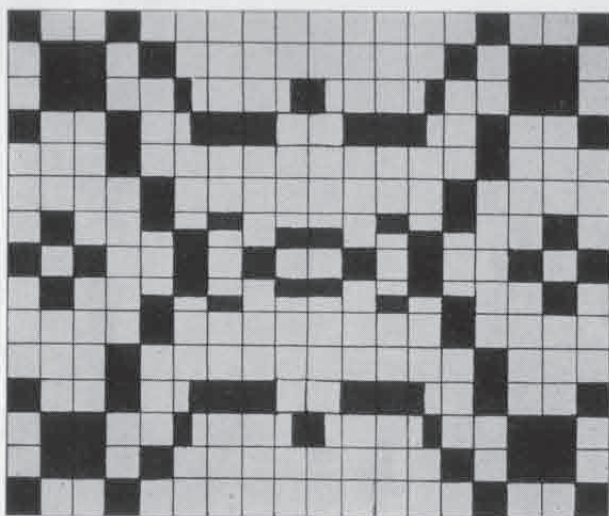


King's Flower

Neutral background, flower in striking color.

L—125 sqs., 5 hks.; Plain weave.

D—96 sqs., 4 hks.; Weave 4.

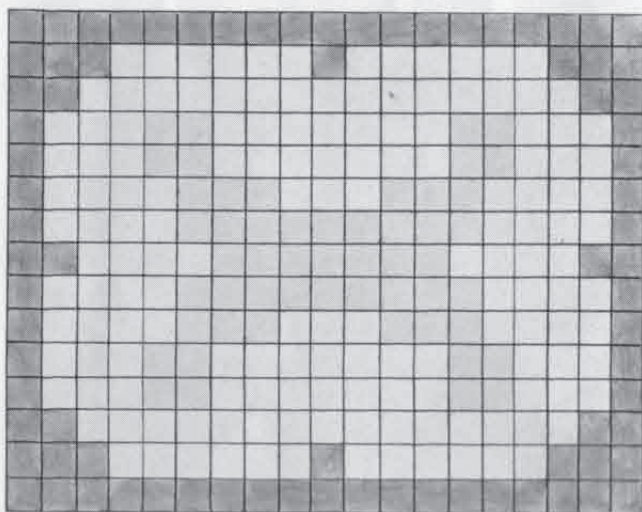


Mosaic

An eggshell background with a variety of colors in the mosaics.

L—178 sqs., $7\frac{1}{2}$ hks.; Mosaics, plain weaving; background, Weave 1.

D—64 sqs., 3 hks.



Bagdad

Shades of blue, green or rose. Also a combination of variegated and plain color.

L—(variegated in rose shades), 152 sqs., $6\frac{1}{2}$ hks.

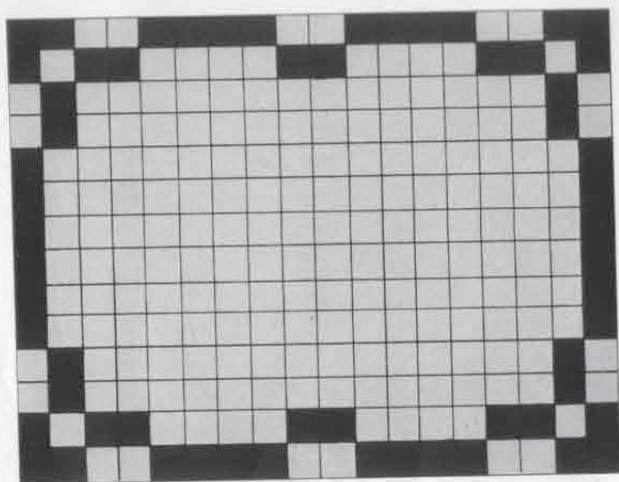
M—light rose, 53 sqs., $2\frac{1}{2}$ hks.; Weave 1.

D—deep rose, 80 sqs., $3\frac{1}{2}$ hks.; Weave 1.

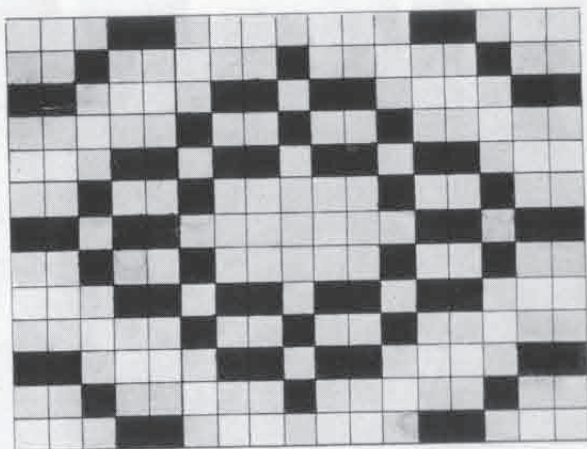


OMBRE

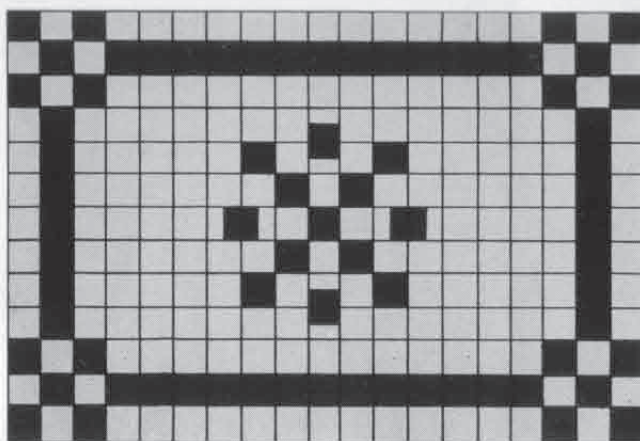
This afghan in a game room, den or for auto use is most effective and serviceable and has a mannish air. Brown.

**Ombre**

L—192 sqs., 8 hks.—variegated
 D—60 sqs., 2½ hks.; Weave 1.

**Ancient Fragment**

Shading from light to dark in one color.
 L—40 sqs., 2 hks.
 M—113 sqs., 4½ hks.
 D—64 sqs., 2 hks.



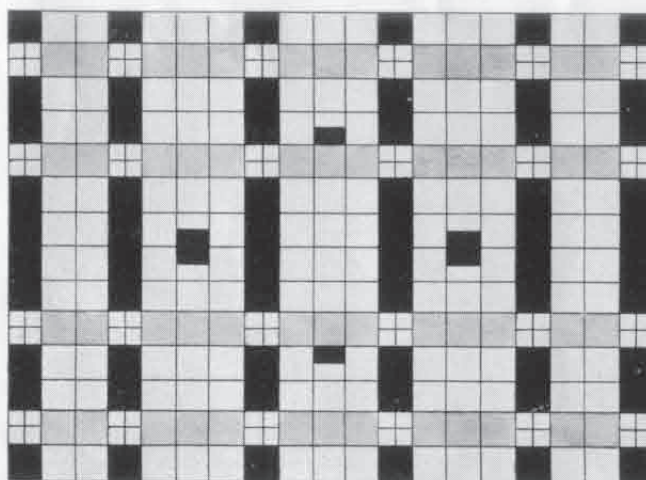
Cambridge Beauty

This afghan in pastels against light background makes a beautiful bed cover or throw for a chaise longue.

L—170 sqs., 7½ hks.

D—73 sqs., 3 hks.

(Small sections made on horizontal LOOMETTE bar, page 31.)



Dot and Dash

Combining an interesting color and design arrangement. Checkered squares may be made as plaids (page 13, Original LOOMETTE Weaves) or four ¼ sections may be made in as many colors (vertical bar, page 31).

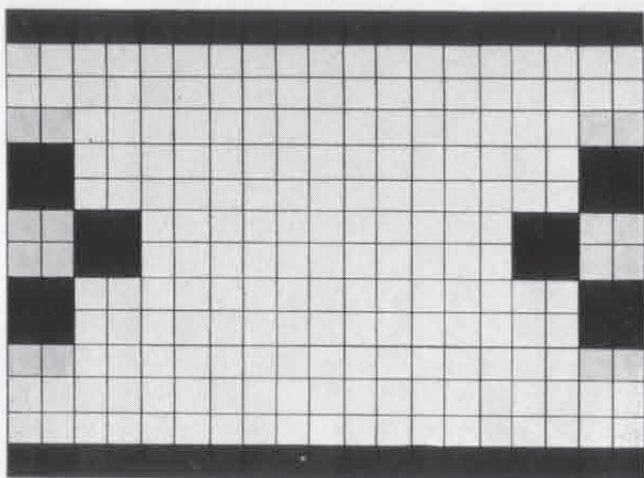
L—122 sqs., 5½ hks.

M—52 sqs., 2½ hks.

D—62 sqs., 3 hks.

Plaid—24 sqs., 1 hk.

(8 half sections, horizontal bar, page 31.)



Sophisticate

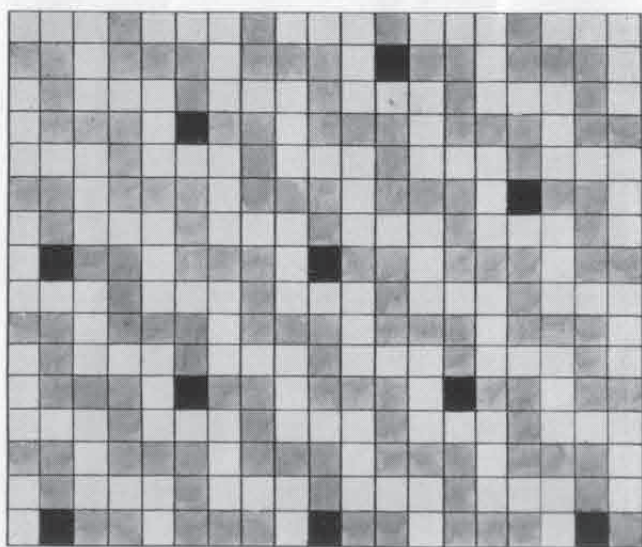
Bold dashes of blue or red, or stunning
in black and white.

L—188 sqs., 8 hks.

M—16 sqs., 1 hk.

D—22 sqs., 2 hks.

Weave 20 throughout.



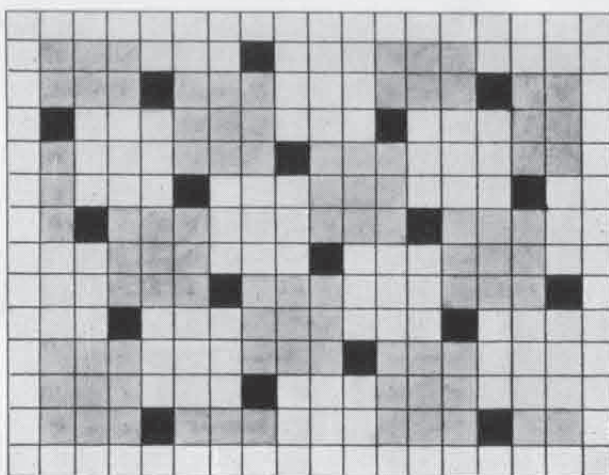
Lightning

Gold, orange and dark henna.

L—156 sqs., 6½ hks.; Plain weaving.

M—138 sqs., 5½ hks.; Weave 10.

D—10 sqs., ½ hk.; Weave 19.



Malibu

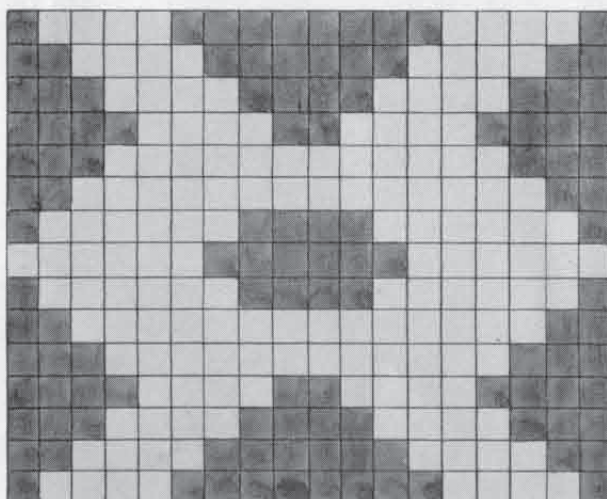
Pastels with dark accents. Also autumn shades.

L—60 sqs., 2½ hks.; Plain weaving.

ML—84 sqs., 3½ hks.; Weave 16.

MD—89 sqs., 4 hks.; Weave 16.

D—19 sqs., 1 hk.; Weave 1.



Wizard's Cross

A striking two-tone or two-color afghan.

L—152 sqs., 6½ hks.; Weave 20.

D—118 sqs., 5 hks.; Weave 1.

Checkerboard

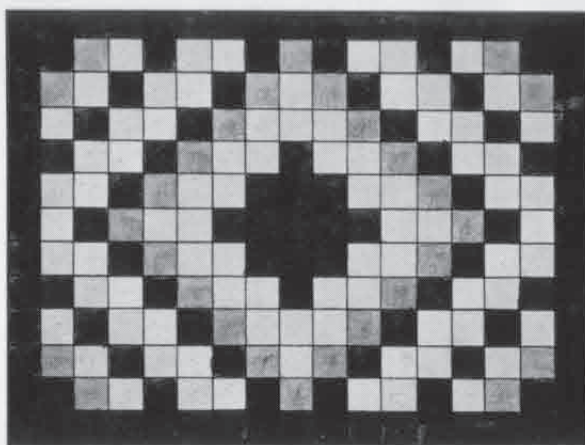
Center panel, eggshell; inside border, light green;
outside border, dark green.

L—70 sqs., 3 hks.; Weave 9 and reverse.

M—40 sqs., 2 hks.; Weave 7 and 8 and reverse.

D—46 sqs., 3½ hks.; Weave 7 and 8 and reverse.





*Looma
E. Casey*

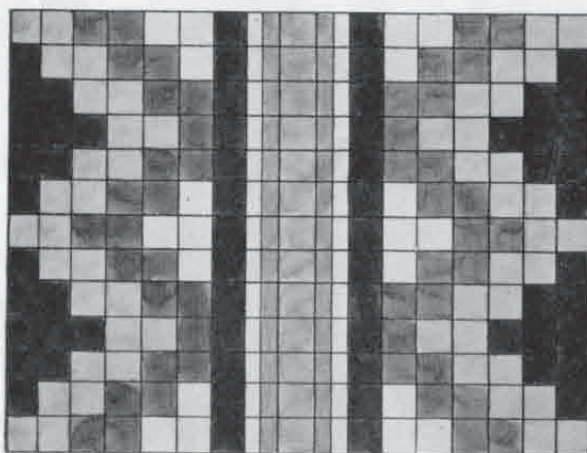
Fiesta

Gay, exotic colorings, or genteel in shades of one color.

L—87 sqs., $3\frac{1}{2}$ hks.; Weave 1.

M—34 sqs., $1\frac{1}{2}$ hks.; Plain weaving.

D—100 sqs., $4\frac{1}{2}$ hks.; Weave 5.



Peruvian

Rich Indian colorings, or shades of one color,

L—20 sqs. and sections, $1\frac{1}{2}$ hks.; Plain weaving.

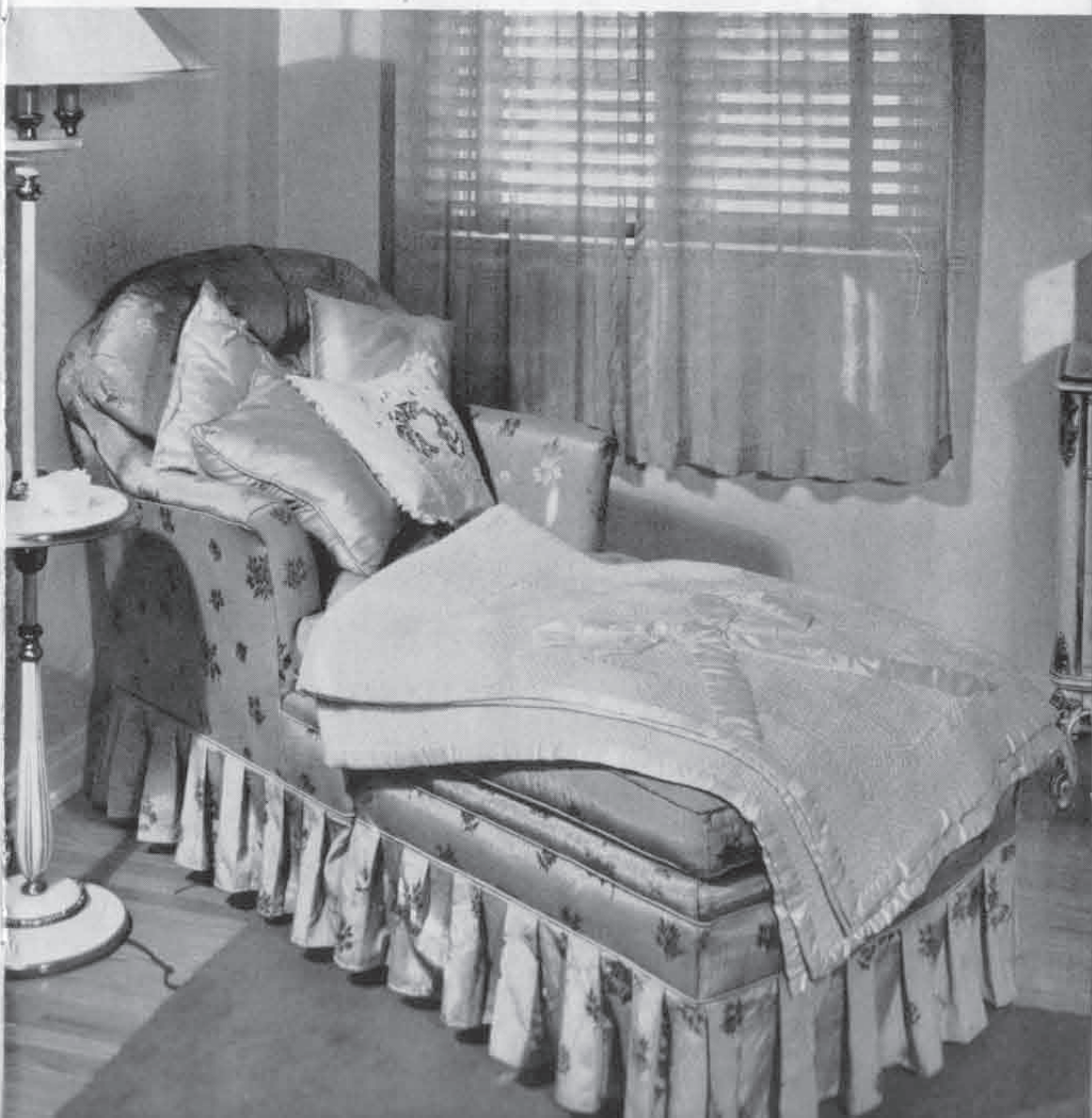
ML—65 sqs. and sections, $3\frac{1}{2}$ hks.; Weave 10.

MD—48 sqs. and sections, 2 hks.; Weave 10.

D—62 sqs. and sections, $2\frac{1}{2}$ hks.; Weave 1.

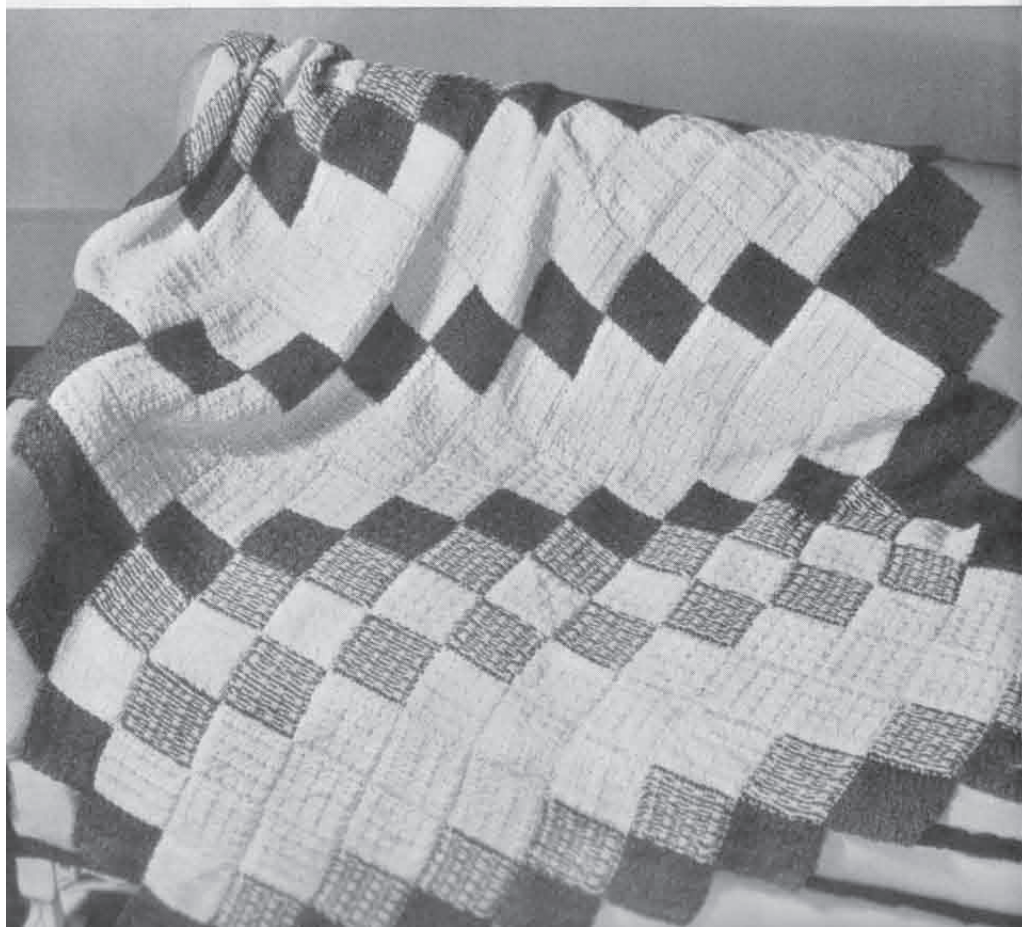
TROUSSEAU

All white bound with satin ribbon, conventional bow.
Weave 1 throughout. 13 sqs. wide by 17 sqs. long; 10 hks.



KENTUCKY COVERLET

(See Page 18)



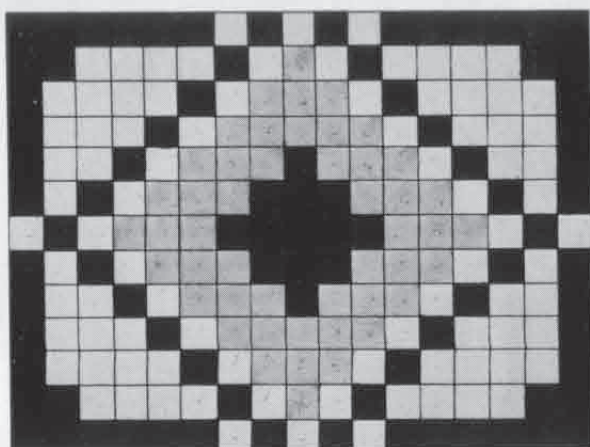


Livest

AUTUMN ECSTASY

(See Page 18)





Autumn Ecstasy

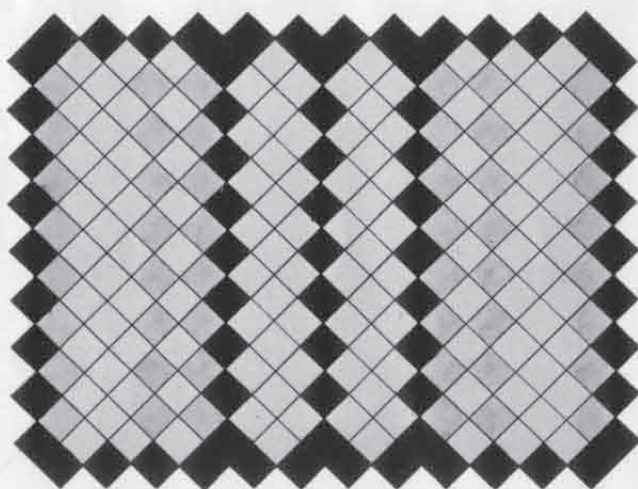
Golds, hennas, browns. This has been one of the most popular afghans shown.

L—22 sqs., 1 hk.; Weave 1.

ML—60 sqs., 2½ hks.; Weave 1.

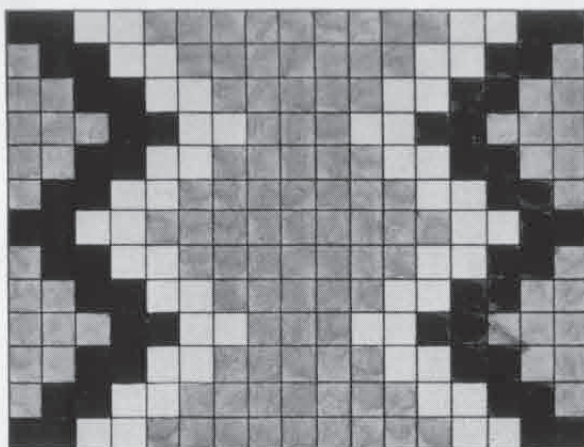
MD—28 sqs., 1½ hks.; Weave 5.

D—121 sqs., 5 hks.; Weave 5.



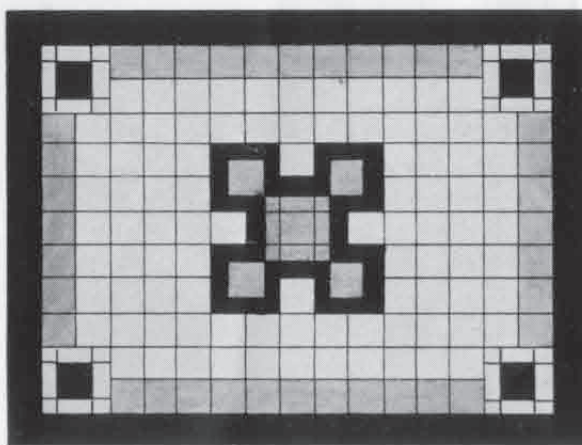
Kentucky Coverlet

This beautiful coverlet is well adapted to use in pairs on twin beds or made larger for a double bed. The weave used throughout is weave 20. The medium square is developed by two threadings of white, one of blue and weaving with blue. Blue, 4 hks.; white, 6 hks.



La Tosca

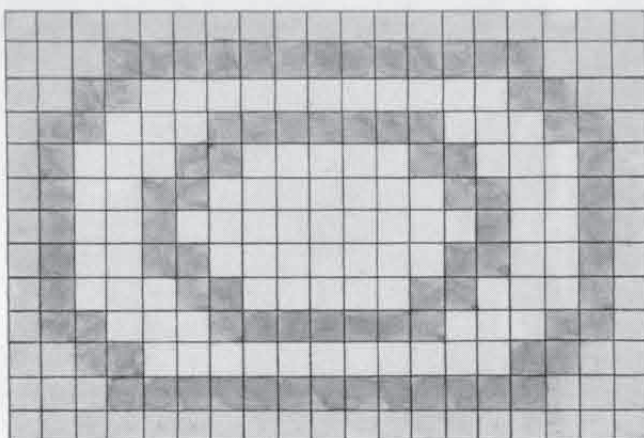
Oriental rug colors.
 L—52 sqs., 2½ hks.
 M—117 sqs., 5 hks.
 D—52 sqs., 2½ hks.
 Weave 20 throughout.



Five Snowballs

An interesting adaptation of an old weaving design. This requires the use of the horizontal and vertical bars (page 31). Shades of blue against eggshell background.

L—92 sqs., 32 sections, 4½ hks.
 M—41 sqs., 8 sections, 2½ hks.
 D—60 sqs., 26 sections, 3 hks.



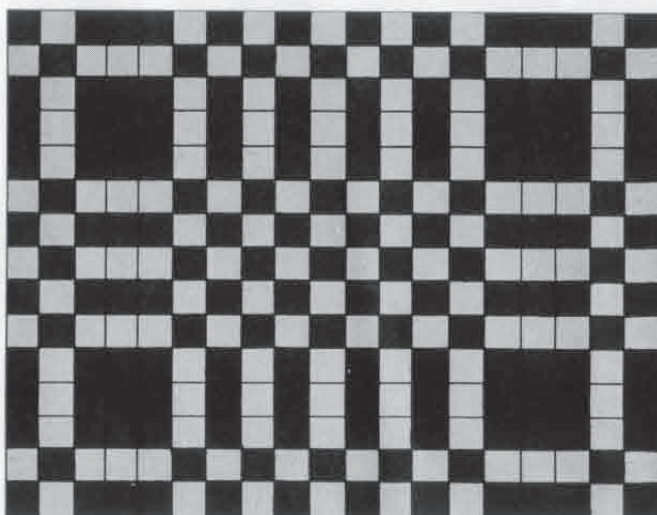
Moderne

In yellow, orange and brown, it is gay for a sun room;
fringed top and bottom.

L—91 sqs., 4 hks. (yellow); Weave 1.

ML—72 sqs., 3 hks. (orange); Weaves 11 and 12.

MD—84 sqs., 3½ hks. (soft brown); Weave 1.



Old South

Again an old design adapted to the LOOMETTE.
Blue and white; henna and beige; or red and eggshell.

A fine bed cover for a child's room.

L—130 sqs., 5½ hks.; Plain weaving.

D—155 sqs., 6½ hks.; Weave 4 and reverse.

Totem

Reds, greens, yellows and shots of black on beige, grey or eggshell background. Horizontal and vertical bars used (page 31). A thrill for son's room!

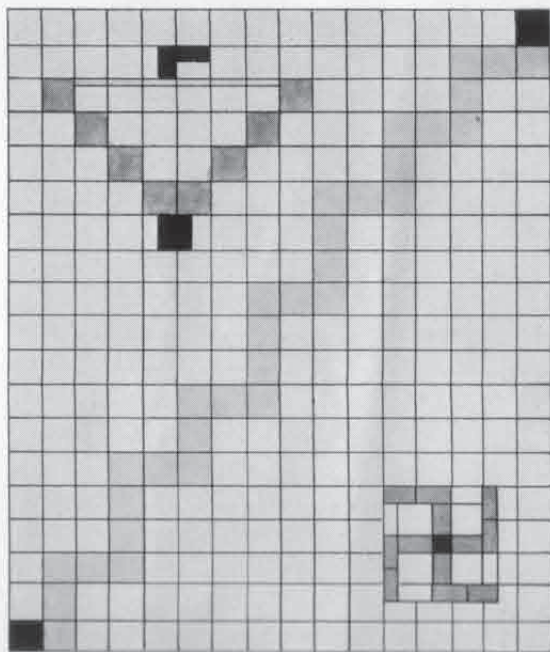
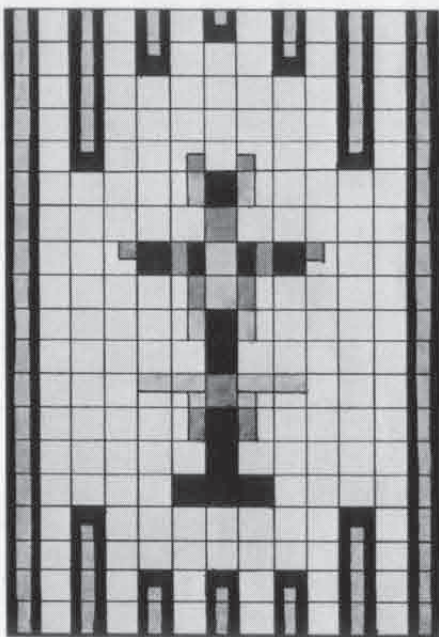
Totem pole and borders;
Weave 1.

L—154 sqs. and sections, 6
hks.; Plain weave.

ML—79 sqs. and sections, 1½
hks., green.

MD—2 sqs., 10 sections, ½
hk., red.

D—10 sqs., 146 sections, 3½
hks., black.



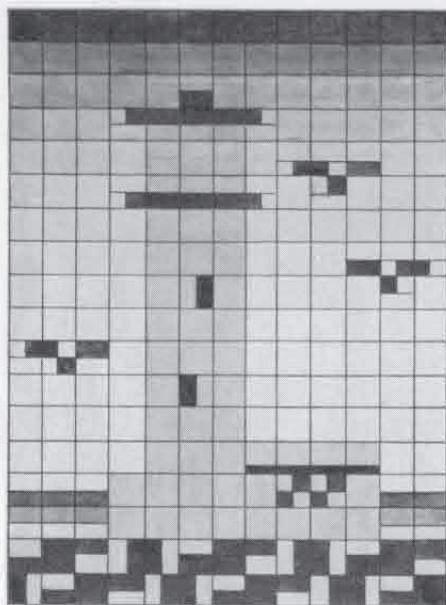
La Azteca

Thunder bird of the Navajos, twirling logs or swastika of the Hopis combined by the Chimayos of La Azteca, N. Mexico: an inspiration.

L—251 sqs. and sections, 10½ hks.
grey; Plain weaving.

M—40 sqs. and 18
sections, 2 hks.
red; Weave 4.

D—3 sqs. and 4 sections, ½ hk. black;
Weave 4.



Lighthouse

For the **experienced weaver**, this stunning and unique afghan offers a real inspiration. Color scheme is merely suggested and subject to the workers own interpretation. Clever use of the two LOOMETTE bars. Sky shades from dark blue to very light blue; sea from dark green to lightest sea green. Sea gulls are dark grey with white flecks embroidered in; Weave 1. Lighthouse, clear white, Weave 4, with red tile balcony. Windows shimmer gold in reflected sun rays. Rocks in tans, browns and blacks; Weave 7. Estimate yarns on basis of 24 sqs. to hank (3.75 oz.).

House on the Hill

A medley of color, weaves and design for the experienced weaver. Yarn requirements must be estimated according to choice of colors used. Suggestions:

Tree trunk to right: Soft brown, Weave 3.

Shading of tree from dark to light green; Weave 1.

Sky: Blue; Plain weave.

House top: Red; Weave 4.

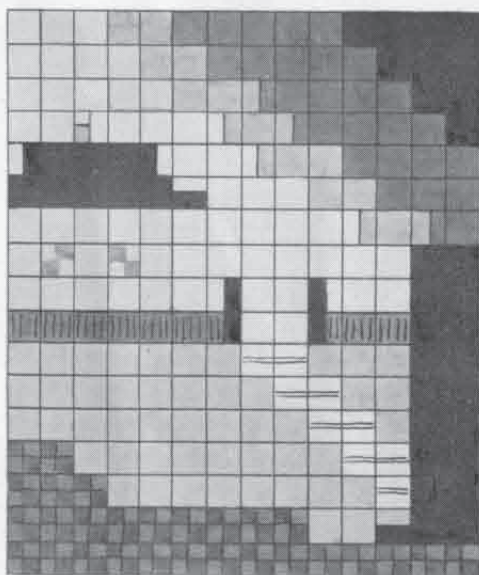
House: White; windows, yellow; Weave 1.

Fence: Tan; Weave 20.

Steps: Grey; Weave 7.

Grass: Medium green; Plain weaving.

Rock wall: Light grey; Weave 9.





Baby Adorable

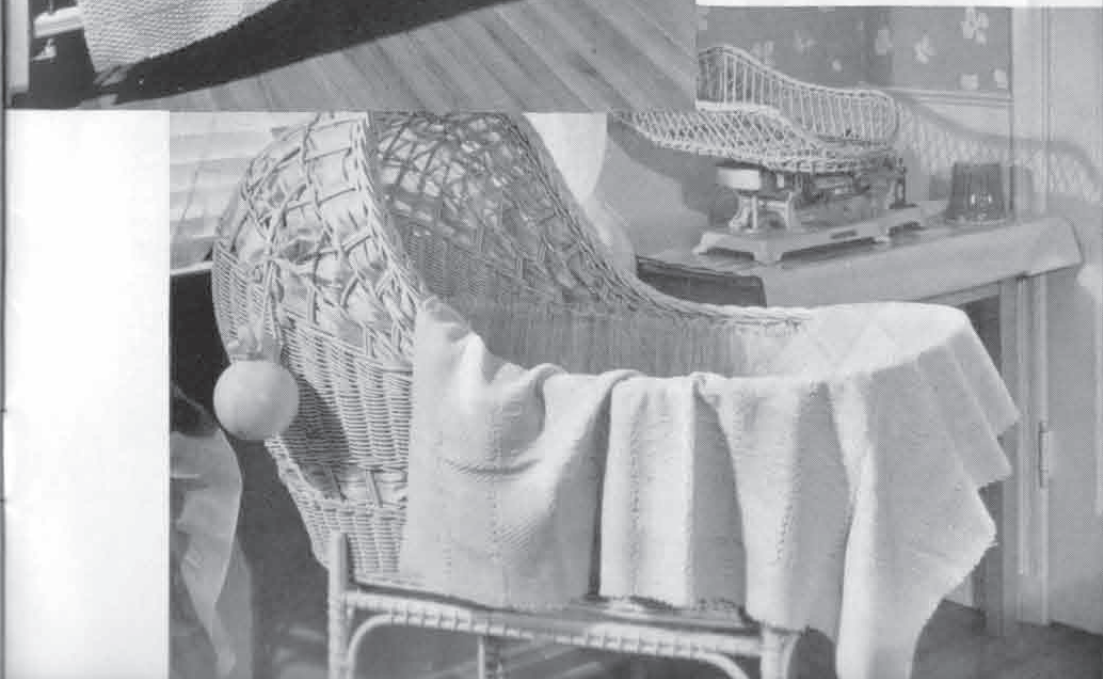
Knitting worsted, crib size.

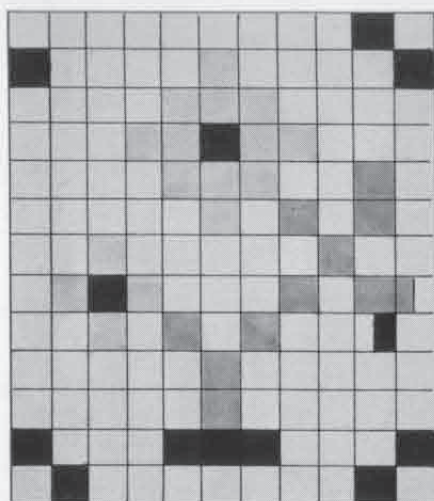
L—white, 34 sqs., 1½ hks.; Weaves 7 and 8 and reverse.

M—pink, 96 sqs., 4 hks.; Weave 4.

Rosebud

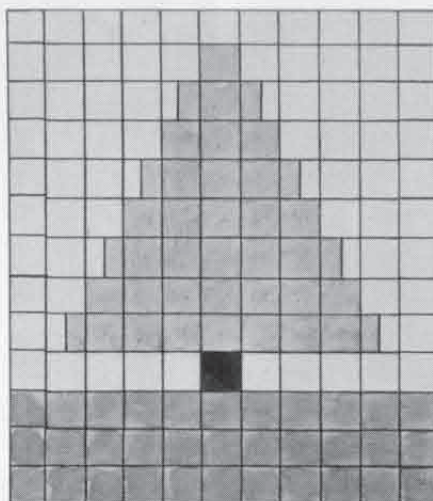
In pink pompadour or four-fold Saxony, this afghan is dainty and light weight. 9 sqs. wide by 10 sqs. long. Rosebud weave and diagonal weave, pages 18 and 19 in Original LOOMETTE Weaves.





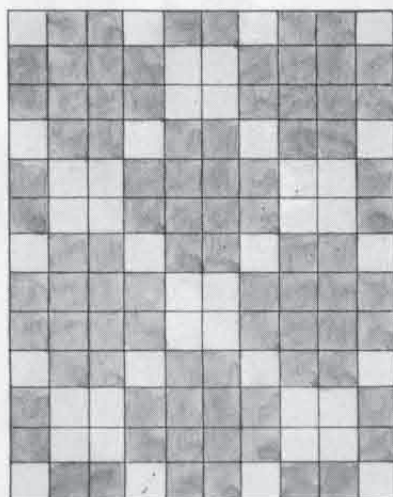
Rose of Sharon

L—eggshell, 105 sqs., 4½ hks.;
Plain weave.
ML—pink, 16 sqs., 1 hk.; Weave 4.
M—leaf green, 11 sqs., ½ hk.;
Weave 10.
D—yellow, 11 sqs., ½ hk.; Plain
weave. Luster wool.



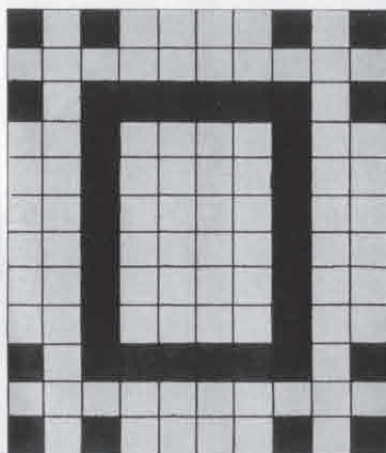
Pine Tree

L—light blue, 69 sqs., 3 hks.;
Plain weave.
M—light green, 32 sqs., 1½ hks.;
Weave 1.
MD—dark green, 33 sqs., 1½
hks.; Weave 1.
D—brown, 1 sq., remnant;
Weave 3. Luster wool.



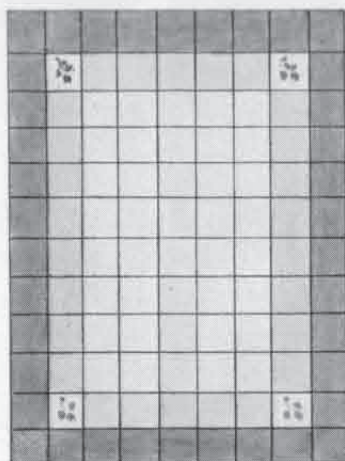
Pastel Medley

L—pink, 86 sqs., 3½ hks.; Plain
weave.
M—blue, 44 sqs., 2 hks.; Weave 1.
Knitting worsted.



Starlet

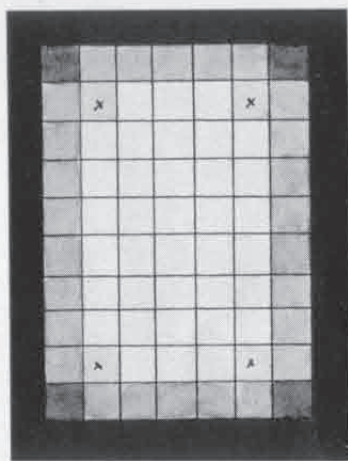
L—white, 84 sqs., 3½ hks.; Plain
weave.
D—pink, 36 sqs., 1½ hks.; center
border, Weaves 11 and 12;
outside corner sqs., Weave 1.
Knitting worsted.



Cecil Bruner

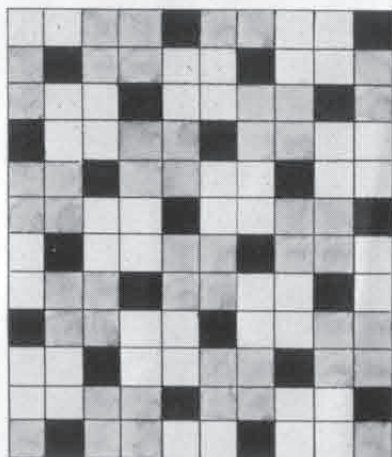
Light pink center to darker pink borders. Small roses embroidered in four corners. Luster wool.

- L—44 sqs., 2 hks.
- M—26 sqs., 1½ hks.
- D—38 sqs., 1½ hks.
- Weave 4 throughout.



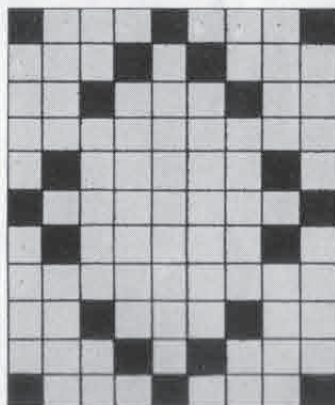
Dreamlet

- L—white, 36 sqs., 2½ hks. (allowing for mixed sqs.).
- ML—thread white, weave pink 4 sqs.
- M—thread twice with white, once with pink, weave pink 26 sqs.
- MD—thread with pink, weave white 4 sqs.
- D—pink, 38 sqs., 2½ hks. (allowing for mixed sqs.).



Baby Blue Eyes

- L—white, 48 sqs., 2 hks.; Plain weave.
- M—pink, 48 sqs., 2 hks.; Weave 13.
- D—blue, 24 sqs., 1 hk.; Weave 1.



Moonbeam

- Two shades of soft yellow.
- L—79 sqs., 3½ hks.
- D—20 sqs., 1 hk.
- Weave 10 throughout.

LITTLE DARLING

Pink pompadour.

8 sqs. wide by ten sqs. long,
8 balls pompadour or Saxony.

Little Darling Weaves

(reversing not necessary)

Inside section:

1R.—P. across

2R.—U3-O3-U1-O3-U1-O3-U1-O3-
U1-O3-U1-O3-P.2-U3

3R.—P.2-U3-P.2-O3-U1-O3-U1-O3-
U1-O3-U1-O3-U3-P.2

4R.—U3-O1-U3-O3-U1-O3-U1-O3-
U1-O3-P.2-U3-O1-U3

5R.—P.2-U3-O1-U3-P.2-O3-U1-O3-
U1-O3-U3-O1-U3-P.2

6R.—U3-O1-U3-P.17-U3-O1-U3

7R.—P.2-U3-O1-U3-P.13-U3-O1-U3-
P.2

8R.—same as 6R.



- 9R.—same as 7R.
 10R.—same as 6R.
 11R.—same as 7R.
 12R.—U3-O1-U3-P.2-O3-U1-O3-U1-O3-U1-O3-U3-O1-U3
 13R.—P.2-U3-O3-U1-O3-U1-O3-U1-O3-U1-O3-P.2-U3-P.2
 14R.—U3-P.2-O3-U1-O3-U1-O3-U1-O3-U1-O3-U1-O3-U3
 15R.—U1-O3-U1-O3-U1-O3-U1-O3-U1-O3-U1-O3-U1-O3-U1-O3-P.3
 16R.—P. across

Inner border:

- 1R.—P. across
 2R.—U3-O1-U3-O1-U3-P.20
 3R.—P.22-U3-O1-U3-P.2
 Remaining rows, continue alternating 2R and 3R
 16R.—P. across

Inner border, reversed:

- 1R.—P. across
 2R.—U1-O3-U1-O3-U1-O3-P.19
 3R.—P.21-O3-U1-O3-P.3
 Remaining rows, continue alternating 2R and 3R
 16R.—P. across

Inner mitred corner:

- 1R.—P. across
 2R.—U1-O3-U1-O3-U1-O3-U1-O3-U1-O3-U1-O3-U1-O3-U1-O3-P.3

- 3R.—U3-P.2-O3-U1-O3-U1-O3-U1-O3-U1-O3-U1-O3-P.3
 4R.—U1-O3-U1-O3-U1-O3-U1-O3-U1-O3-U1-O3-U1-O3-P.2-U3-P.2
 5R.—U3-O1-U3-P.2-O3-U1-O3-U1-O3-U1-O3-U1-O3-P.3
 6R.—U1-O3-U1-O3-U1-O3-U1-O3-U1-O3-U1-O3-P.2-U3-O1-U3-P.2
 7R.—U3-O1-U3-O1-U3-P.20
 8R.—P.22-U3-O1-U3-P.2

Continue alternating 7R and 8R until 16R is reached

- 16R.—P. across

Inner mitred corner reversed:

- 1R.—P. across
 2R.—U3-O1-U3-O1-U3-P.20
 3R.—P.22-U3-O1-U3-P.2
 Continue alternating 2R and 3R until 11R is reached

- 11R.—U1-O3-U1-O3-U1-O3-U1-O3-U1-O3-P.2-U3-O1-U3-P.2
 12R.—U3-O1-U3-P.2-O3-U1-O3-U1-O3-U1-O3-U1-O3-P.3
 13R.—U1-O3-U1-O3-U1-O3-U1-O3-U1-O3-U1-O3-P.2-U3-P.2
 14R.—U3-P.2-O3-U1-O3-U1-O3-U1-O3-U1-O3-U1-O3-P.3
 15R.—U1-O3-U1-O3-U1-O3-U1-O3-U1-O3-U1-O3-U1-O3-U1-O3-P.3
 16R.—P. across

DESIGN WEAVING IN ONE COLOR**GOLDEN DREAM**

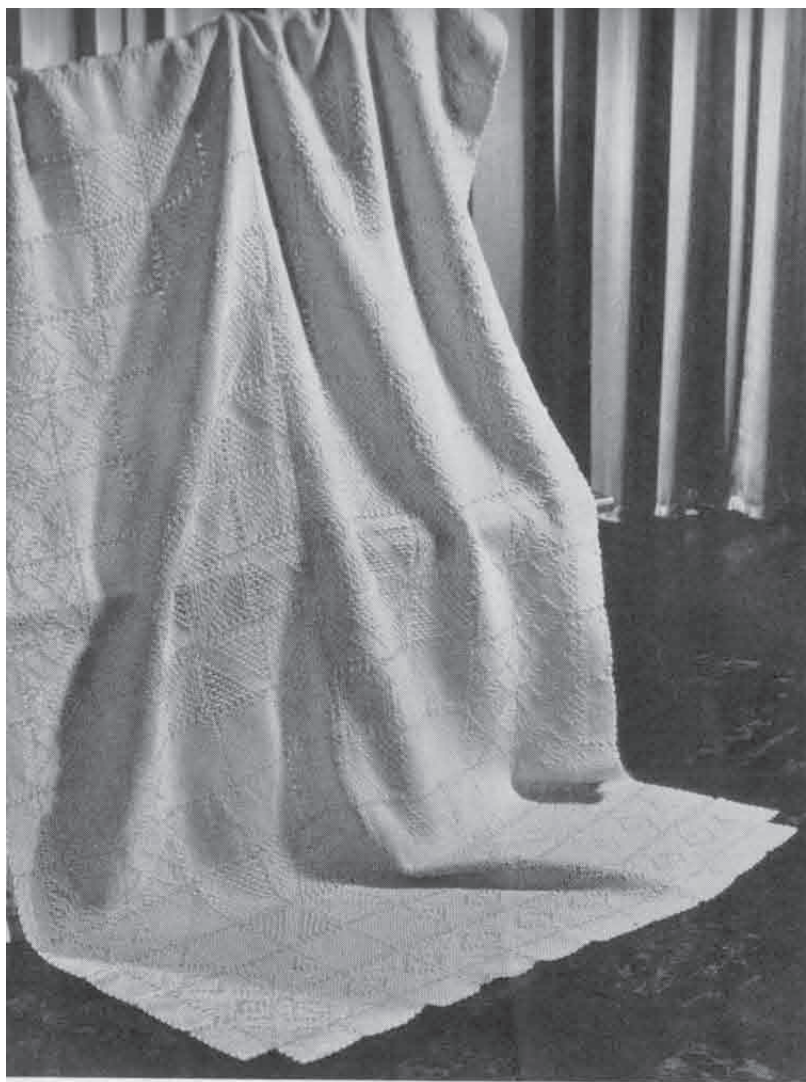
(Picture on page 28)

- 1R.—P. across
 2R.—U3-O1-U3-O1-U3-O1-U3-O1-U3-O1-U3-P.8
 3R.—P.10-U3-O1-U3-O1-U3-O1-U3-O1-U3-O1-U3-P.2
 4R.—U3-O1-U3-O1-U3-O1-U3-O1-U3-O1-U3-P.9-U3
 5R.—P.2-U3-P.9-U3-O1-U3-O1-U3-O1-U3-P.2
 6R.—U3-O1-U3-O1-U3-O1-U3-P.9-U3-O1-U3
 7R.—P.2-U3-O1-U3-P.9-U3-O1-U3-O1-U3-P.2
 8R.—U3-O1-U3-O1-U3-P.9-U3-O1-U3-O1-U3
 9R.—P.2-U3-O1-U3-O1-U3-P.9-U3-O1-U3-P.2
 10R.—U3-O1-U3-P.9-U3-O1-U3-O1-U3-O1-U3
 11R.—P.2-U3-O1-U3-O1-U3-O1-U3-P.9-U3-P.2
 12R.—U3-P.9-U3-O1-U3-O1-U3-O1-U3-O1-U3
 13R.—P.2-U3-O1-U3-O1-U3-O1-U3-O1-U3-P.10
 14R.—P.8-U3-O1-U3-O1-U3-O1-U3-O1-U3-O1-U3
 15R.—P.2-U3-O1-U3-O1-U3-O1-U3-O1-U3-P.6
 16R.—P. across

Golden Dream, Reverse

(Read Foreword in "Original LOOMETTE Weaves")

- 1R.—P. across
 2R.—U1-O3-U1-O3-U1-O3-U1-O3-U1-O3-U1-O3-P.7
 3R.—P.9-O3-U1-O3-U1-O3-U1-O3-U1-O3-P.3 (Con't page 28)



4R.—U1-O3-U1-O3-U1-O3-U1-O3-
U1-O3-P.11

5R.—U1-O3-P.9-O3-U1-O3-U1-O3-
U1-O3-P.3

6R.—U1-O3-U1-O3-U1-O3-U1-O3-
P.9-O3-P.3

7R.—U1-O3-U1-O3-P.9-O3-U1-O3-
U1-O3-P.3

8R.—U1-O3-U1-O3-U1-O3-P.9-O3-
U1-O3-P.3

9R.—U1-O3-U1-O3-U1-O3-P.9-O3-
U1-O3-P.3

10R.—U1-O3-U1-O3-P.9-O3-U1-O3-
U1-O3-P.3

11R.—U1-O3-U1-O3-U1-O3-U1-O3-
P.9-O3-P.3

12R.—U1-O3-P.9-O3-U1-O3-U1-O3-
U1-O3-P.3

13R.—U1-O3-U1-O3-U1-O3-U1-O3-
U1-O3-P.11

14R.—P.9-O3-U1-O3-U1-O3-U1-O3-
U1-O3-P.3

15R.—U1-O3-U1-O3-U1-O3-U1-O3-
U1-O3-U1-O3-P.7

16R.—P. across

BAGS

The bags illustrated on this page may be made from the photographs by counting the squares and sections. The standing bags have a six-inch boxing all the way around. The beautiful hand-made frames used are products of the Brown Woodcraft, Cartercraft Studios, sole distributors. Use of LOOMETTE bars makes possible a wide variety of designs in bags.

A—Autumn shades from light henna to dark.

L—20 half sections, $\frac{1}{2}$ hk. (boxing); Weave 4.

M—30 half sections, 1 hk. (boxing); Weave 4.

D—8 sqs. at top, 14 eighteen-pin sections, 1 hk. (boxing); Weave 4.

B—Beige and Royal blue.

L—8 sqs., 5 half sections, 1 hk. (allowing for mixed sections).

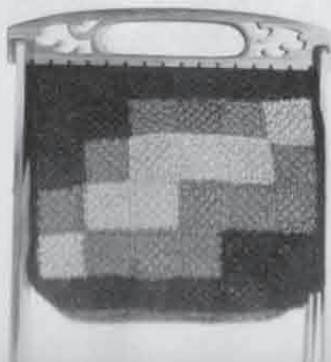
M—Thread beige, weave blue, 15 half sections.

D—16 fifteen-pin sections (with boxing), 1 hk.; Weave 20.

A
C



B
D

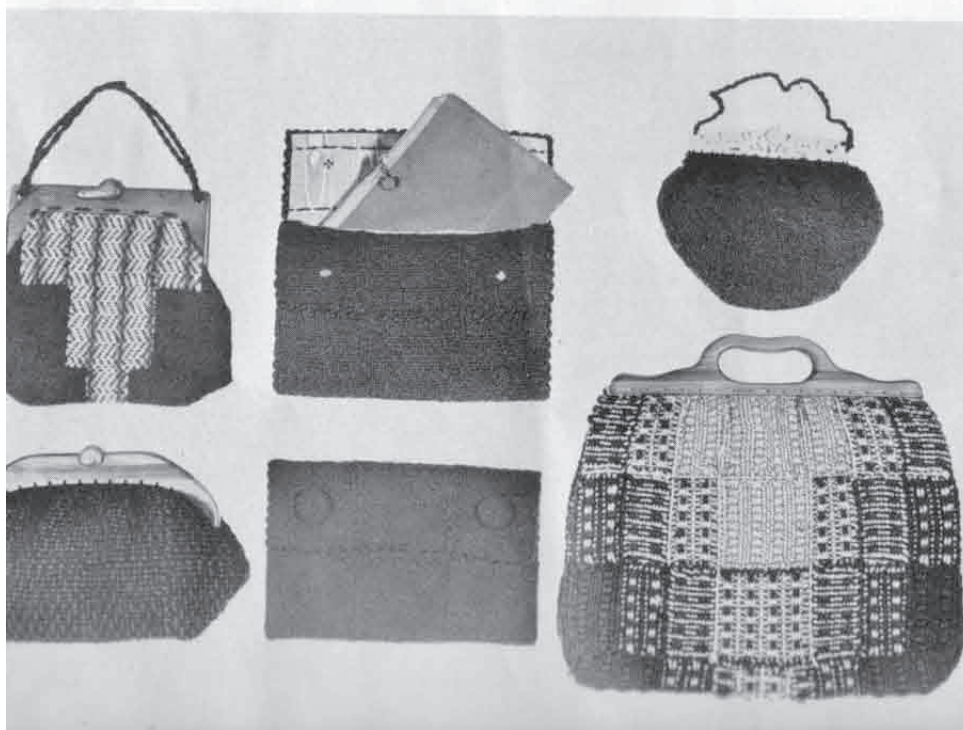


- C—Eggshell and blue (no boxing).
L—8 half sections, 2 hks. blue, 1 hk. white; Weave 20.
ML—10 half sections, thread white, weave blue.
M—10 half sections, thread twice white, once blue and weave blue.
MD—10 half sections, thread blue, weave white.
D—13 sqs., 6 half sections.
- D—Shades of green to match Light and Shadow afghan on cover; entire use of vertical bar sections for $\frac{1}{4}$ sq.
L—14 sqs., $\frac{1}{2}$ hk.
M—24 sqs., $\frac{1}{2}$ hk.
D—50 sqs., 1 hk. (boxing).
- E—Herringbone weave, page 17, Original LOOMETTE Weaves, Germantown. Center, variegated blue, 1 ball. Outside, navy blue, 2 balls.
- F—Purse insert in envelope is another Cartercraft product. Of durable suede cloth, two pockets and zipper opening, it may be used from one purse to another so one can have purses to match every costume. Line purse in the flat before joining side seams.
15 sqs., 1 hk. luster wool; Weave 3.
Yarn, same requirements as Bag C.
- G and H—The pouch purses are made with corners tucked inside to give diagonal line. G—1 hk. luster wool; Weave 4. H—1 ball nubby yarn; Plain weave.
- J—1 hk. tan, 1 hk. brown; Weave 20.

E
H

F

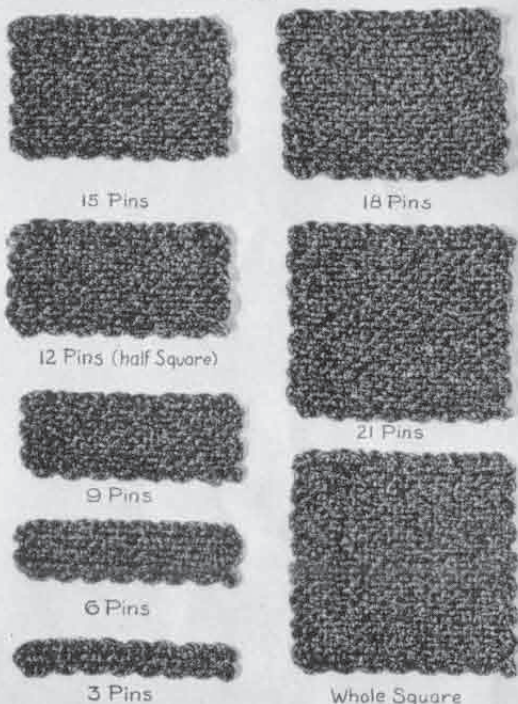
G
J



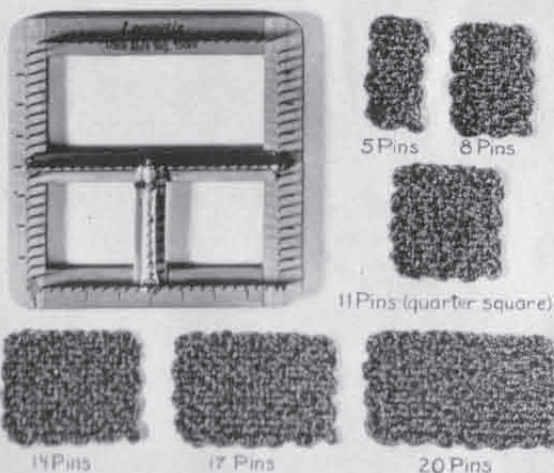
The LOOMETTE and two bars makes 14 different sizes which prove invaluable in designing and making of articles on the LOOMETTE. **The two bars are an exclusive feature of the LOOMETTE.** In the making of garments which are to be cut and fitted, the bars make possible the narrowing or widening of a seam line, thus eliminating cutting except around armhole and sleeves. Study pattern layout, page 25, "Garments and Gift Suggestions." A well-fitted garment necessitates some cutting and therefore **we recommend that a commercial pattern be used** and the squares laid out until sections of pattern are covered, join and assemble as a cloth garment. You will be delighted with the results. And the joy and ease of wearing a LOOMETTE garment cannot be fully extolled. No blocking—just steam lightly under dampened cloth. No mussing, bagging, stretching or sagging! Careful joining according to LOOMETTE high standards (directions, page 26, "Garments and Gift Suggestions") and you will have a garment which will receive the admiration of your friends, and be a constant joy to you.

Yarns	Weight	Number of sqs.
Luster rug wool.	3.75 oz.	24
Knitting worsted.	3.75 oz.	24
Germantown . . .	1 oz.	12
4 fold Saxony . . .	1 oz.	14
Shetland	1 oz.	15
Pompadorou	1 oz.	15

HORIZONTAL BAR



VERTICAL BAR



A FEW HELPFUL DO'S

1. Finish beginning and end threads on every square and cut off threads before removing from LOOMETTE.
2. Lay out squares with like corners matched to like corners if you would have a perfect joining.
3. Use a commercial pattern of your choice of style for garments and cut freely after stitching along cutting edge.
4. Steam sections of garment after squares are joined and before seams are sewed up, thus assuring no further shrinkage in finished garment.
5. Never allow weight of iron to rest on garment. Place evenly dampened cloth over garment and hold iron just over area to be steamed.